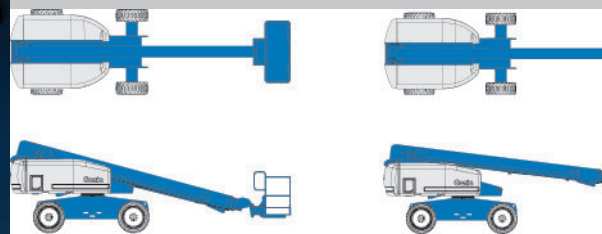
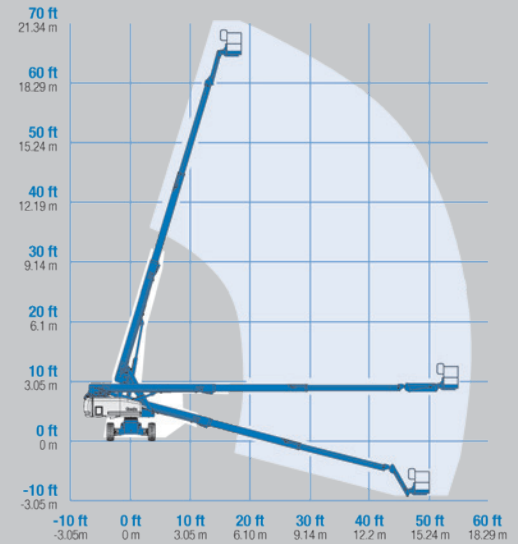


S65



Diesel	✓	
Non-Marking Tyres	✗	
4x4 Rough Terrain	✓	
Narrow	✗	
Jib Boom	✓	
Reach Height	21.8 m	71'6"
Platform Height	19.8 m	65'0"
Max. Horizontal Reach	17.1 m	56'2"
Height Closed	2.7 m	8'11"
Length	9.5 m	31'2"
Width	2.5 m	8'2"
Platform Size	1.8 x 0.7 m	6'0" x 2'4"
Weight	10024 kgs	22100 lbs
Lifting Capacity	225 kgs	500 lbs

- Fully proportional joystick controls with ramp up/down feature
- Hydraulic platform rotation
- 360° continuous turntable rotation
- Closed-loop hydrostatic drive
- Positive traction drive
- Self-levelling platform
- Anti-restart engine protection
- Foot switch time out
- Auto engine fault shutdown
- Tilt alarm
- Horn