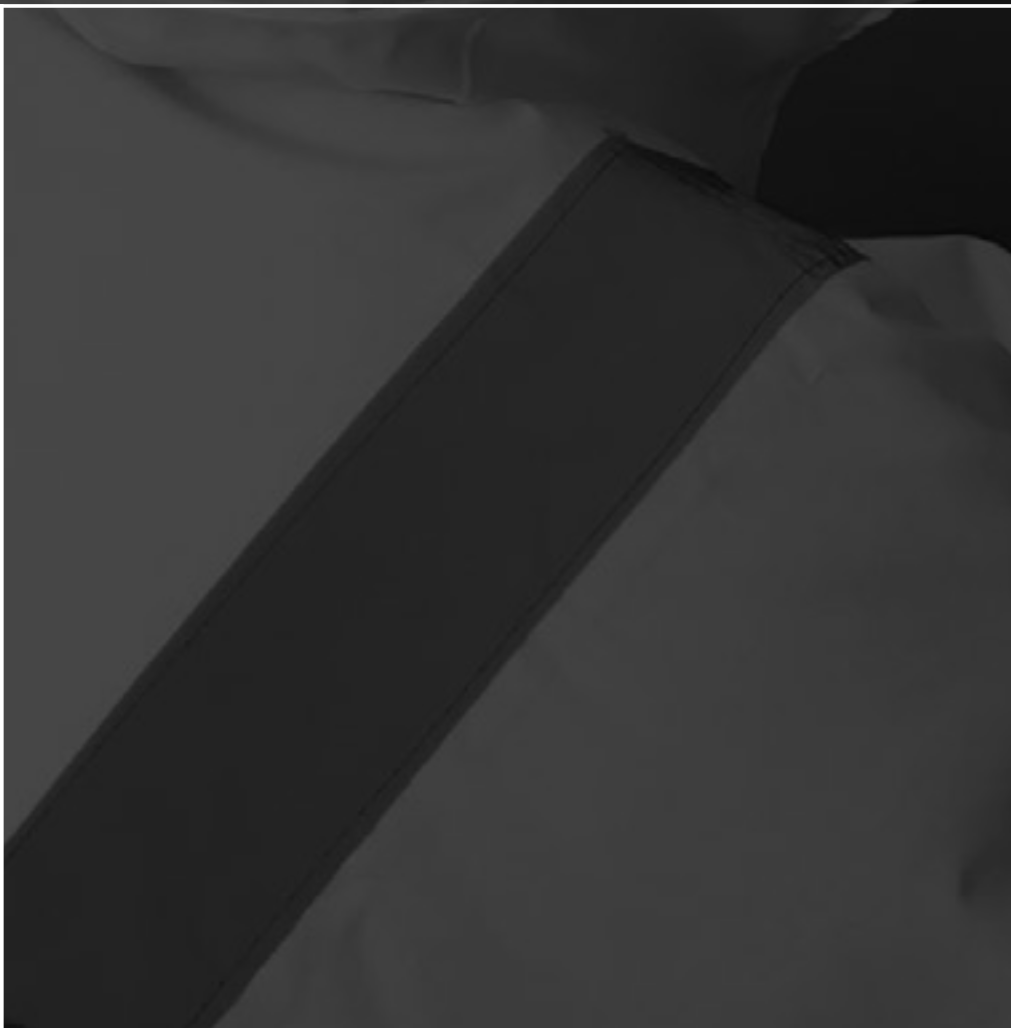


# GTA SERVICE PLANS

## OUR SUPPORT WON'T END WITH A DELIVERY!

We'll make sure that your investment keeps working for you well in to the future.



# SERVICE PLANS THAT ARE TAILORED TO YOUR INDIVIDUAL NEEDS

GTA Service Plans are available on any manufacturers machine of any age, New, Used or Refurbished, even if you didn't buy it from us.\*



It is a legal requirement that all access platforms are fit for purpose, appropriate for the task, suitably marked and subject to a statutory 6 month 'thorough examination'. Our Service Plans are designed to help you to stay compliant.



**INDUSTRY COMPLIANCE**  
Helps you to stay compliant with the latest LOLER<sup>†</sup> and PUWER<sup>†</sup> regulations



**REDUCED COSTS**  
Spreads the cost of servicing and maintenance evenly throughout the year



**REDUCED DOWNTIME**  
Planned Preventative Maintenance (PPM) ensures your investment keeps on working



**EXPERT TECHNICIANS**  
Dedicated team of mobile service engineers with a comprehensive stock of parts

## GTA SERVICE PLANS

### PLATINUM

- Weekend breakdown call-outs
- Weekday breakdown call-outs
- All parts and labour
- 2 Services per year
- 2 LOLER inspections per year

### GOLD

- Weekday breakdown call-outs
- All consumable parts and labour
- 2 Services per year
- 2 LOLER inspections per year.

### SILVER+

- 2 Services per year
- 2 LOLER inspections per year.

### SILVER

- 1 Services per year
- 2 LOLER inspections per year.

### BRONZE

- 2 statutory LOLER inspections per year.

Plans exclude accidental damage, misuse or neglect.

\*An initial chargeable inspection may be required if the unit is not currently under a GTAccess service plan.  
†HSE Lifting Operations and Lifting Equipment Regulations 1998 (LOLER). Provision and Use of Work Equipment Regulations 1998 (PUWER)