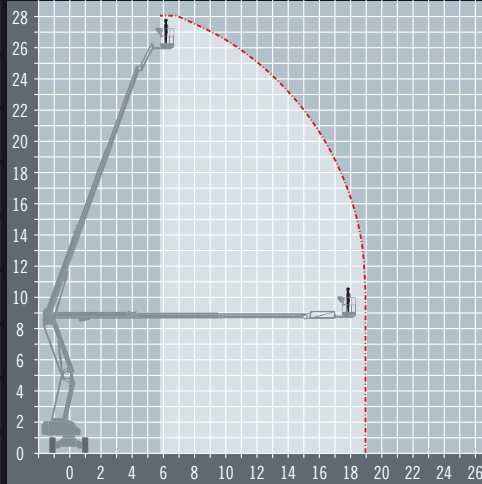


# NIFTYLIFT HR28BE

## Bi-energy 4WD articulating boom

REACH HEIGHT	28 m
PLATFORM HEIGHT	26 m
UP AND OVER	8.4 m
HORIZONTAL REACH	19 m
STOWED HEIGHT	2.7 m
LENGTH X WIDTH*	9.28 x 2.49 m
PLATFORM SIZE	2.4 x 0.9 m
WEIGHT	14,650 kg
LIFT CAPACITY	280 kg



\*Length and width shown are when stowed.

- HYBRID POWERED**  
Diesel and Battery power for flexibility
- OUTDOOR RATED**  
Wind rated for outdoor use
- NON MARKING TYRES**  
Prevents marking to finished floors
- ROUGH TERRAIN**  
4 wheel drive for uneven ground
- IPAF 3b**  
Requires IPAF category 3b

The Niftylift Height Rider 28 (HR28) is a new generation of environmentally conscious bi-energy four wheel drive work platforms from Niftylift. Combining advanced power-source technology with efficient 4x4, it delivers outstanding performance from a compact and low-weight design.

## A range of extra's for 'Hire or Purchase' designed to give you the GTAdvantage™

- STOP NUISANCE BORROWING WITH GTA SECURE™**
- STAY FULLY CHARGED WITH TRANSFORMERS AND LEADS**
- DOUBLE POINT HARNESSES TO KEEP YOU SAFE AT HEIGHT**
- GAIN ANOTHER PAIR OF HANDS WITH PLATFORM ACCESSORIES**
- REFUEL ON-SITE THE EASY WAY WITH A FUEL BOX!**
- PROTECT SENSITIVE GROUND WITH 'GROUND GUARDS'**

Find out more about the 'GTAdvantage' extras at [gtaccess.co.uk](http://gtaccess.co.uk)



**niftylift**