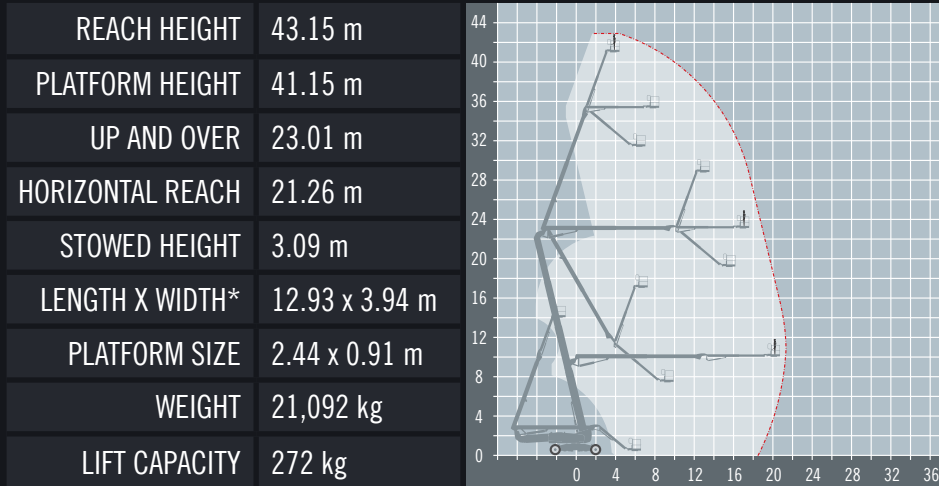


# GENIE ZX135/70

## Outstanding Reach and Up-and-Over



\*Width with axle extended for use. Width with axle retracted is 2.49 m (8' 2")

- DIESEL POWERED**  
Perfect for external applications
- OUTDOOR RATED**  
Wind rated for outdoor use
- ROUGH TERRAIN**  
4 wheel drive for uneven ground
- EXTENDING AXLES**  
Axles extend for use and retract for transport
- IPAF 3b**  
Requires IPAF category 3b

The Genie Z135/70 is the biggest boom in Genie's articulating range, designed for the largest construction and maintenance tasks. Genie's X-Chassis expanding axle extends for driving and boom operation but retracts when stowed, giving a transport width of just 2.49m so it fits comfortably on a truck.

## A range of extra's for 'Hire or Purchase' designed to give you the GTAdvantage™

- STOP NUISANCE BORROWING WITH GTA SECURE™**
- PROTECT SENSITIVE GROUND WITH 'GROUND GUARDS'**
- DOUBLE POINT HARNESSES TO KEEP YOU SAFE AT HEIGHT**
- PROTECT FINISHED SURFACES WITH WHEEL COVERS'**
- REFUEL ON-SITE THE EASY WAY WITH A FUEL BOX!**
- OPERATOR TRAINING FOR THIS ACCESS PLATFORM**

Find out more about the 'GTAdvantage' extras at [gtaccess.co.uk](http://gtaccess.co.uk)

