

THE POWER  
IN ACCESS™

HIRE | TRAINING | SALES | SERVICE 03303334848



SKYJACK

# SKYJACK SJ85+

## ARTICULATED BOOM WITH EXTRA LIFT CAPACITY

ALTERNATIVES: JLG 800AJ, Genie Z80/60



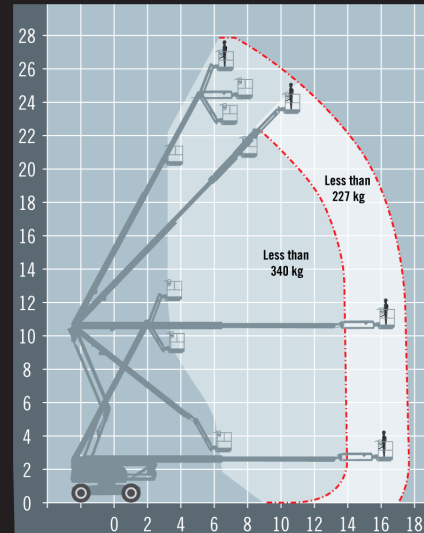
Impressive dual capacities (227 kg / 340 kg) and 2-3 people rating increases productivity and job site performance



True vertical rise with minimal tailswing and a class leading optimised reach envelope



Compact stowed dimensions



### TECHNICAL DATA

SIZE	METRIC	IMPERIAL
Reach height	27.91m	91ft 5in
Platform height	25.91m	85ft 0in
Up and over	10.36m	33ft 9in
Horizontal height	17.07m	56ft 0in
Stowed height*	2.67	8ft 7in
Length x width	11.63m x 2.49m	38ft 1in x 8ft 1 in
Platform size	1.83m x 0.91m	6ft 0in x 2ft 9in
Weight	16965kg	37401lb
Lift Capacity	340kg	749.5lb

\*Length and width shown are when stowed.

### FEATURE



Perfect for external applications



4 wheel drive for uneven ground



Requires IPAF category 3b



Wind rated for outdoor use



Carry more personnel/equipment

A range of extra's for 'Hire or Purchase' designed to give you the GTAdvantage™

For more information about GTAccess: please contact us and send us an email

