

DIESEL ARTICULATED BOOM

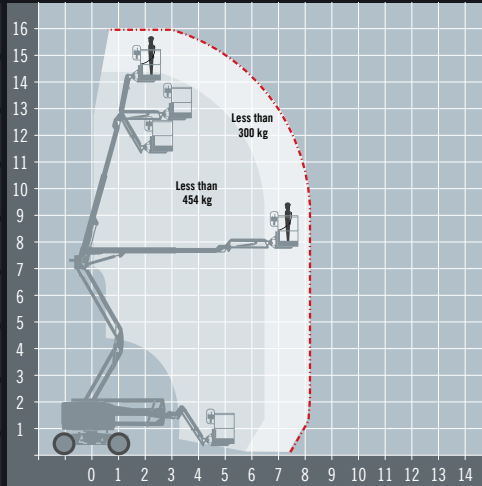
# GENIE Z45/25+

ALTERNATIVES: Manitou 160ATJ+







## Articulated boom with extra lift capacity

REACH HEIGHT	15.86 m
PLATFORM HEIGHT	13.86 m
UP AND OVER	7.44 m
HORIZONTAL REACH	7.55 m
STOWED HEIGHT	2.25 m
LENGTH X WIDTH*	6.66 x 2.29 m
PLATFORM SIZE	1.83 x 0.76 m
WEIGHT	6,870 kg
LIFT CAPACITY	300/454 kg



\*Length and width shown are when stowed.

-  **DIESEL POWERED**  
Perfect for external applications
-  **OUTDOOR RATED**  
Wind rated for outdoor use
-  **ROUGH TERRAIN**  
4 wheel drive for uneven ground
-  **EXTRA LIFT CAPACITY**  
Carry more personnel/equipment
-  **IPAF 3b**  
Requires IPAF category 3b

The Genie Z45+ articulating boom is the redesigned Xtra Capacity™ version of the popular rough-terrain Genie Z45/25 RT diesel powered articulating boom. It can perform a wider range of heavier lift tasks on construction and industrial jobsites thanks to its dual lift capacity.


## A range of extra's for 'Hire or Purchase' designed to give you the GTAdvantage™

 **STOP NUISANCE BORROWING WITH GTA SECURE™**

 **PROTECT SENSITIVE GROUND WITH 'GROUND GUARDS'**

 **DOUBLE POINT HARNESSES TO KEEP YOU SAFE AT HEIGHT**

 **PROTECT FINISHED SURFACES WITH WHEEL COVERS'**

 **REFUEL ON-SITE THE EASY WAY WITH A FUEL BOX!**

 **OPERATOR TRAINING FOR THIS ACCESS PLATFORM**

Find out more about the 'GTAdvantage' extras at [gtaccess.co.uk](http://gtaccess.co.uk)



**Genie**  
A TEREX BRAND

**THE POWER  
IN ACCESS™**

HIRE | TRAINING | SALES | SERVICE **0 3 3 0 3 3 3 4 8 4 8**

[gtaccess.co.uk](http://gtaccess.co.uk)

GTAZ45/25XC-2019/1