

DIESEL TELESCOPIC BOOM

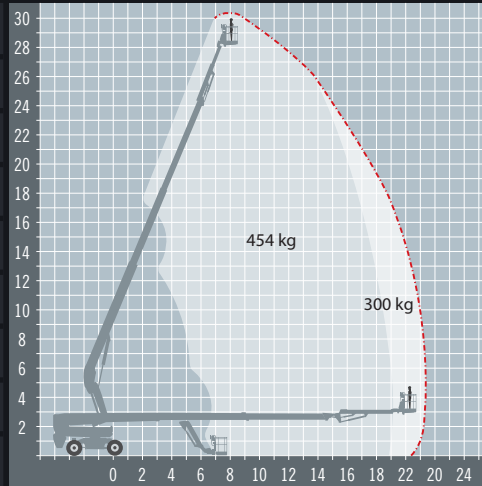
DINGLI BT30RT

ALTERNATIVES: JLG860SJ



All wheel steer, all terrain telescopic boom

REACH HEIGHT	30.30 m
PLATFORM HEIGHT	28.30 m
HORIZONTAL REACH	22.65 m
STOWED HEIGHT*	2.87 m
LENGTH	12.3m
WIDTH	2.5 m
PLATFORM SIZE	2.44 x 0.9 m
WEIGHT	18,210 kg
LIFT CAPACITY	300/454 kg



-  **DIESEL POWERED**
Perfect for external applications
-  **OUTDOOR RATED**
Wind rated for outdoor use
-  **ROUGH TERRAIN**
4 wheel drive for uneven ground
-  **IPAF 3b**
Requires IPAF category 3b

The Dingli BT30RT telescopic boom offers a working height of just over 30 metres with an impressive 22.7 metres of outreach and an unrestricted platform capacity of 454kg. The low centre of gravity design provides maximum stability at an impressive working height and outreach for such a compact rough terrain machine.


A range of extra's for 'Hire or Purchase' designed to give you the GTAdvantage™

 **STOP NUISANCE BORROWING WITH GTA SECURE™**

 **PROTECT SENSITIVE GROUND WITH 'GROUND GUARDS'**

 **DOUBLE POINT HARNESSSES TO KEEP YOU SAFE AT HEIGHT**

 **PROTECT FINISHED SURFACES WITH WHEEL COVERS'**

 **REFUEL ON-SITE THE EASY WAY WITH A FUEL BOX!**

 **OPERATOR TRAINING FOR THIS ACCESS PLATFORM**

Find out more about the 'GTAdvantage' extras at gtaccess.co.uk



DINGLI
Exceed · New Height